

ADRES DO KORESPONDENCJI:

P.P.U. „LUCZKO”
ul. Królewskiej Tamy
44-100 Gliwice
skr. poczt. 155



www.luczko.pl
ppuluczko@interia.pl

Rok założenia 1993

TRAVERSE "BIG-BAG"

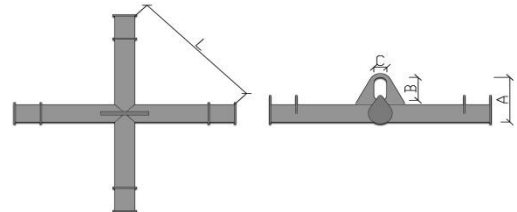
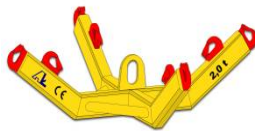
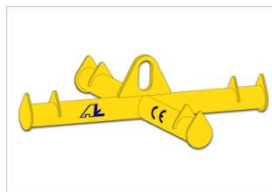
The Traverse is designed to transport BIG-BAG sacks.

Hanging it in a straight line on its four arms will allow to increase its volume even by about 30% (compared to the transport, where 4 arms are placed on the one hook at the same time)

Thanks to this solution, loading and unloading is very simple.

Dimension L-827 mm is given for standard bags with a width of 900mm.

There is a possibility to make a traverse for bags with dimensions of e.g. 1100 mm.



CLOSED PIPING CONSTRUCTION.

TYPE	DOR [kg]	A [mm]	B [mm]	C [mm]	L [mm]	WEIGHT [kg]
TB - 1	1 000	215	60	110	827	31
TB -1,5	1 500	218	60	110	827	34
TB - 2	2 000	266	76	130	827	62
TB - 3	3 000	276	76	130	827	75

CERTIFIED PRODUCTS



The traverse meets the requirements of standards and regulations by:

- ✓ PN-84 / M-06521 range - design
- ✓ PN-89 / M-84702 general requirements and tests
- ✓ PN-EN 13155 and the Machinery Directive 2006/42 / EC
- ✓ The quality certificate corresponds to the point 2.1 of EN 10204